

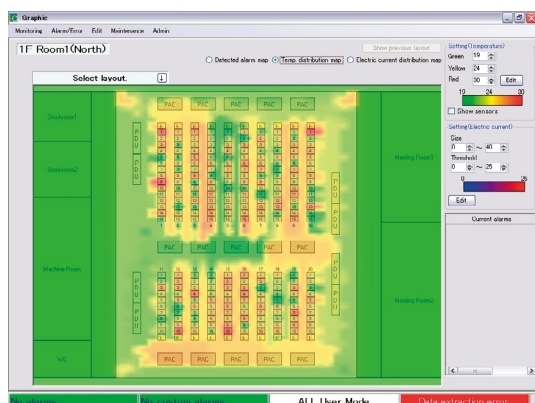


iDCNavi is a measurement and monitoring system for current, temperature, etc. for a data-center.

The system monitors the data in real-time from a large number of measuring points and works for the early detection and identification of the cause of the problem. The system also has a feature of remote operation and opening and closing monitoring of electronic locks of racks and can check the locking status at the floor map.

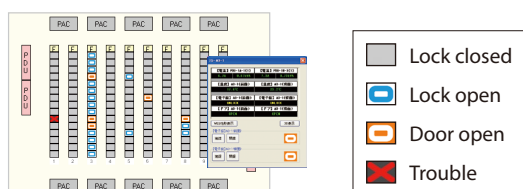
Thermal distribution display

You can see the temperature distribution in the server room in one view to identify the hot spot. The record of temperature change can be displayed in an animation which can be used to identify the source of the problem derived from temperature.



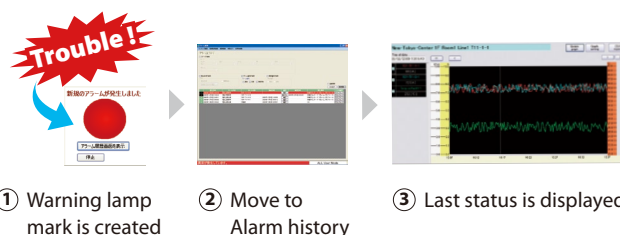
Electronic lock control /Rack opening/closing monitoring

It is possible to perform the opening/closing control of an electronic lock and opening/closing monitoring of rack door. It can remotely do the open/close operation of an each rack door and also do the same operation for a group of racks or all the racks in a server room.



Alarm function

When alarm signal is issued, warning lamp mark is displayed on the screen. Alarm history view screen can be displayed directly from the warning lamp mark.



Functionality List

• Data acquisition	
• Alarm monitoring	Mail notification Alarm record management
• Monitoring function	Graphical picture of monitoring Historical trend picture Realtime data display
• Documentation function	CSV output
• Maintenance function	Customer management Group editing Measuring point management



Japan Novel Corporation

Phone: +81-3-3927-8801 Fax: +81-3-3927-8802
2-30-2, Ohji, Kita-ku, Tokyo 114-0002 Japan
e-mail: sales@jnovel.co.jp

<http://www.jnovel.co.jp/service/idcnavi/>